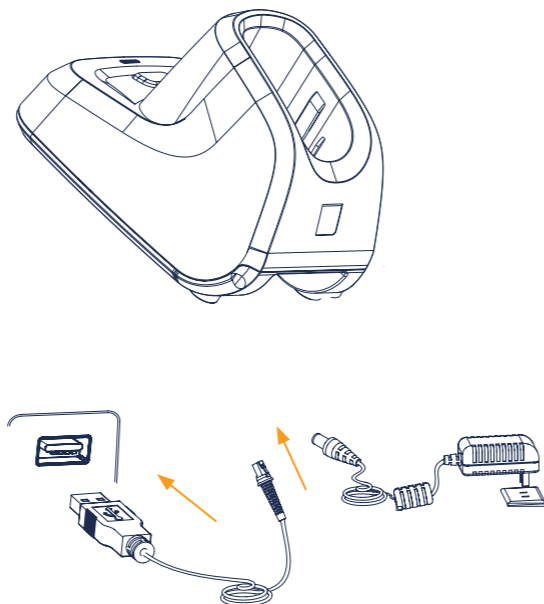


Note: For initial use, place the scanner in the powered cradle to deactivate the battery protection and power on the device automatically.

Mean of Bluetooth LED	
Green LED	Connection successful
Red LED	Connection failed
Mean of power LED	
Green LED	Power ≥ 20%
Red LED	Power < 20%
LED Flashing Quickly	Charging via Cradle
LED Flashing Slowly	Charging via USB
LED Solid on	Fully Charged

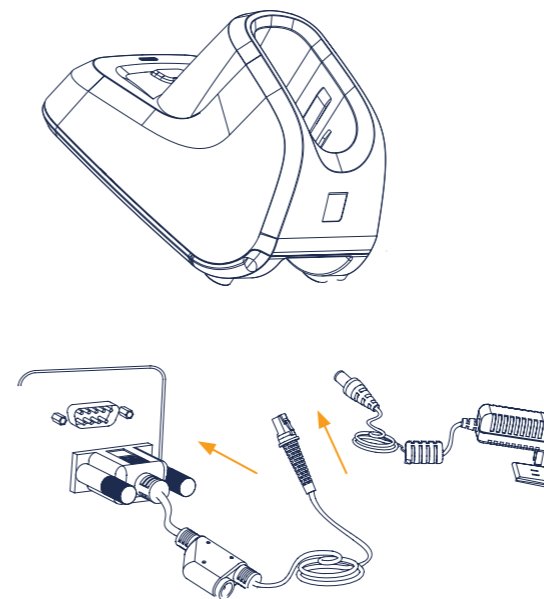
1



Connect the scanner to a host device through a USB cable with RJ45 and USB connectors:

- 1 Plug the RJ45 connector into the data port on the cradle.
- 2 Plug the USB connector into the USB port on the host device.

2



Connect the scanner to a host device through a RS-232 cable with RJ45 and RS-232 connectors and a power jack:

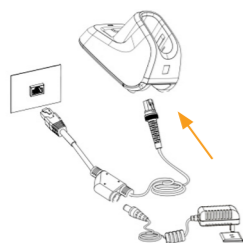
- 1 Plug the RJ45 connector into the data port on the cradle.
- 2 Plug the RS-232 connector into the RS-232 port on the host device.
- 3 Plug the supplied power adapter into the power jack on the RS-232 cable.

3

NVH220 LOPHIUS AI BT



Quick Start Guide V2.0



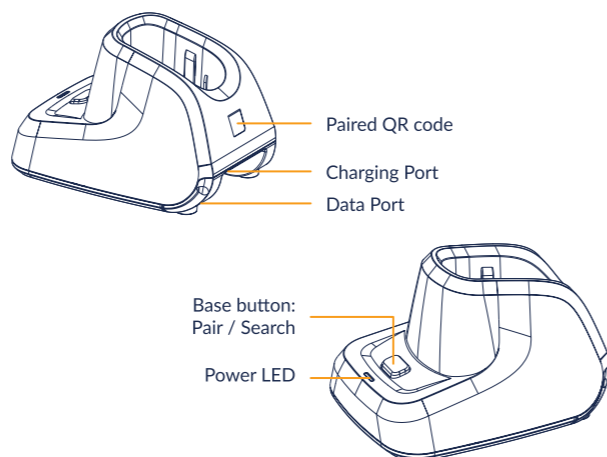
Connect the scanner to a host device through a Ethernet cable with RJ45 and Ethernet connectors and a power jack:

- 1 Plug the RJ45 connector into the data port on the cradle.
- 2 Plug the RJ45 connector into the Ethernet port on the host device.
- 3 Plug the supplied power adapter into power jack on the Ethernet cable.

Troubleshooting

- 1 Ensure that the data cable is securely connected.
- 2 Ensure that the barcode labels are intact and undamaged.
- 3 Ensure that the type of barcode symbology is enabled.
- 4 Ensure that the scanner is paired with the cradle.
- 5 If an abnormal beep is heard during charging, it indicates a charging issue. Please use a different USB port or the supplied power adapter for charging. Avoid using a HUB, as it may result in slow charging or even fail to charge the scanner.
- 6 If you are unable to solve the issues on your own, please reach out to your dealer or contact Newland's customer service center for assistance.

4



Pair / Search

- 1 Pairing of scanner and cradle
Place the scanner in the cradle, press the base button, and hear a successful pairing sound to complete the pairing. If you need to unpair, long press the base button;
Alternatively, pair the scanner with another cradle again.
- 2 Search the scanner
When the scanner detaches from the cradle, press the base button, and the scanner that is paired with it will emit a sound prompt.

5



Marking and European Economic Area (EEA) Statement of Compliance

We hereby declares that this device is in compliance with the essential requirements and other relevant provisions of Directive 2014/53/EU.

The ventilation should not be implied by covering the ventilation openings with items, such as newspapers, table-cloths, curtains, etc.;

This product's max operating ambient temperature is 60 degrees C.

⎓ Direct Current Symbol

Recycling

This product bears the selective sorting symbol for Waste electrical and electronic equipment (WEEE). This means that this product must be handheld pursuant to European directive 2012/19/EU in order to be recycled or dismantled to minimize its impact on the environment.

6



Visit our website
newland-id.com



1 Scanner information



@QRYSYS
Query all information

2 Defaults settings



@FACDEF
Restore all factory defaults

3 Power off



@PWROFF
Power off

1

4 Scanning mode



@SCNMOD0
Level mode



@SCNMOD3
Continuous mode



@SCNMOD5
Aiming mode



@SCNMOD7
Batch mode

2

5 Interface settings



@INTERF8
USB COM Port emulation



@INTERF3
USB HID Keyboard



@INTERF24
RS-232



@INTERF25
Ethernet

3

6 Illumination color



@ILLCLR0
Red LED



@ILLCLR1
White LED



@ILLCLR4
Blue LED



@ILLCLR2
Red LED + White LED



@ILLCLR5
Red LED + White LED + Blue LED

4

7 Operation modes



@WLSBAT0
Synchronous mode



@WLSBAT1
Automatic batch mode



@WLSBAT2
Manual batch mode

5

8 Decode area



@CADENA0
Whole area decoding



@CADENA2
Aiming area decoding



@CADENA4
Priors on aimed barcode

6

9 Terminating character suffix



@TSUSENA0
Disable terminating character suffix



@TSUSET0D
Set terminating character to CR



@TSUSET0DOA
Set terminating character to CRLF

7