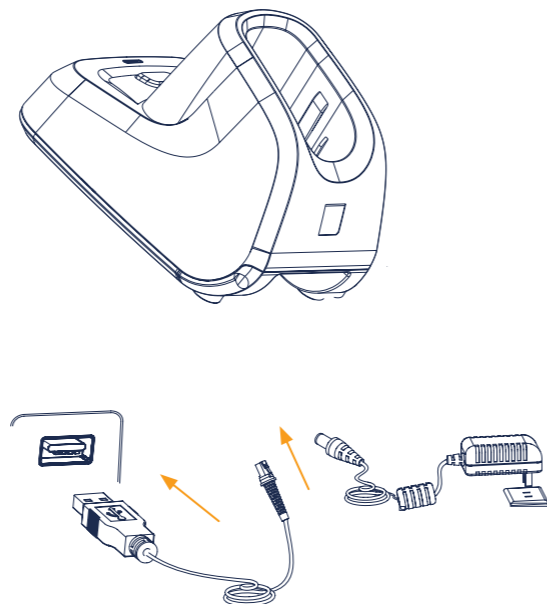


Note: For initial use, place the scanner in the powered cradle to deactivate the battery protection and power on the device automatically.

Mean of Bluetooth LED	
Green LED	Connection successful
Red LED	Connection failed
Mean of power LED	
Green LED	Power ≥ 20%
Red LED	Power < 20%
LED Flashing Quickly	Charging via Cradle
LED Flashing Slowly	Charging via USB
LED Solid on	Fully Charged

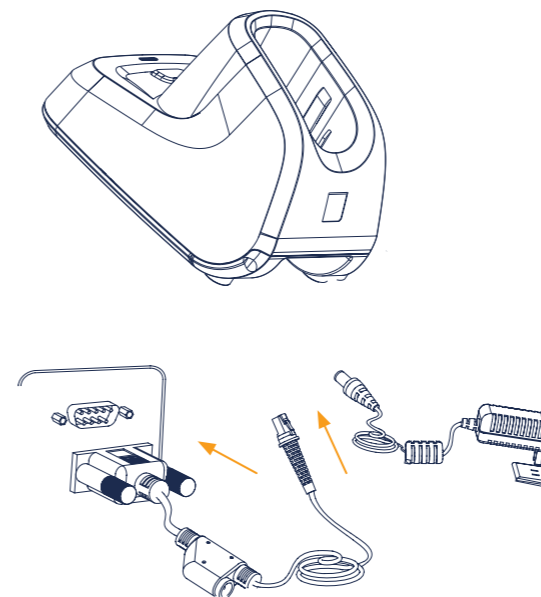
1



Connect the scanner to a host device through a USB cable with RJ45 and USB connectors:

- 1 Plug the RJ45 connector into the data port on the cradle.
- 2 Plug the USB connector into the USB port on the host device.

2



Connect the scanner to a host device through a RS-232 cable with RJ45 and RS-232 connectors and a power jack:

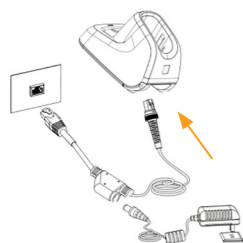
- 1 Plug the RJ45 connector into the data port on the cradle.
- 2 Plug the RS-232 connector into the RS-232 port on the host device.
- 3 Plug the supplied power adapter into the power jack on the RS-232 cable.

3

## NVH220 LOPHIUS AI BT



Quick Start Guide V2.0



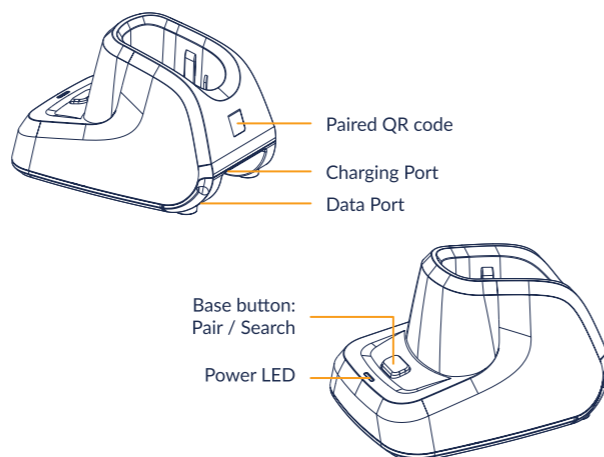
Connect the scanner to a host device through a Ethernet cable with RJ45 and Ethernet connectors and a power jack:

- 1 Plug the RJ45 connector into the data port on the cradle.
- 2 Plug the RJ45 connector into the Ethernet port on the host device.
- 3 Plug the supplied power adapter into power jack on the Ethernet cable.

### Troubleshooting

- 1 Ensure that the data cable is securely connected.
- 2 Ensure that the barcode labels are intact and undamaged.
- 3 Ensure that the type of barcode symbology is enabled.
- 4 Ensure that the scanner is paired with the cradle.
- 5 If an abnormal beep is heard during charging, it indicates a charging issue. Please use a different USB port or the supplied power adapter for charging. Avoid using a HUB, as it may result in slow charging or even fail to charge the scanner.
- 6 If you are unable to solve the issues on your own, please reach out to your dealer or contact Newland's customer service center for assistance.

4



### Pair / Search

- 1 Pairing of scanner and cradle  
Place the scanner in the cradle, press the base button, and hear a successful pairing sound to complete the pairing. If you need to unpair, long press the base button;  
Alternatively, pair the scanner with another cradle again.
- 2 Search the scanner  
When the scanner detaches from the cradle, press the base button, and the scanner that is paired with it will emit a sound prompt.

5



**Marking and European Economic Area (EEA) Statement of Compliance**  
We hereby declares that this device is in compliance with the essential requirements and other relevant provisions of Directive 2014/53/EU.

The ventilation should not be implied by covering the ventilation openings with items, such as newspapers, table-cloths, curtains, etc.;;  
This product's max operating ambient temperature is 60 degrees C.  
--- Direct Current Symbol



This product bears the selective sorting symbol for Waste electrical and electronic equipment (WEEE). This means that this product must be handheld pursuant to European directive 2012/19/EU in order to be recycled or dismantled to minimize its impact on the environment.

6

**Radiofrequency interface requirements Radio transmitters (part 15)**  
This device complies with part 15 of the FCC rules.  
Operation is subject to the following two conditions:  
1 This device may not cause harmful interference.  
2 This device must accept any interference received, including interference that may cause undesired operation.

**FCC** Tested to comply with FCC Standards  
FOR HOME OR OFFICE USE



Visit our website  
newland-id.com



1 Scanner information

@QRYSYS  
Query all information

2 Defaults settings

@FACDEF  
Restore all factory defaults

3 Power off

@PWROFF  
Power off

1

4 Scanning mode

@SCNMOD0  
Level mode

@SCNMOD3  
Continuous mode

@SCNMOD5  
Aiming mode

@SCNMOD7  
Batch mode

2

5 Interface settings

@INTERF8  
USB COM Port emulation

@INTERF3  
USB HID Keyboard

@INTERF24  
RS-232

@INTERF25  
Ethernet

3

6 Illumination color

@ILLCLR0  
Red LED

@ILLCLR1  
White LED

@ILLCLR4  
Blue LED

@ILLCLR2  
Red LED + White LED

@ILLCLR5  
Red LED + White LED + Blue LED

4

7 Operation modes

@WLSBAT0  
Synchronous mode

@WLSBAT1  
Automatic batch mode

@WLSBAT2  
Manual batch mode

5

8 Decode area

@CADENA0  
Whole area decoding

@CADENA2  
Aiming area decoding

@CADENA4  
Priors on aimed barcode

6

9 Terminating character suffix

@TSUSENA0  
Disable terminating character suffix

@TSUSET0D  
Set terminating character to CR

@TSUSET0DOA  
Set terminating character to CRLF

7