



NQUIRE 1500 MOBULA II

Micro Kiosk

Disclaimer

© 2024 Newland Europe BV. All rights reserved.

Please read the manual carefully before using the product and operate it according to the manual. It is advised that you keep this manual for future reference.

Do not disassemble the device or remove the seal label from the device; doing so will void the product warranty provided by Newland Europe BV.

All pictures in this manual are for reference only, and the actual product may differ.

Regarding product modification and update, Newland Europe BV reserves the right to make changes to any software or hardware to improve reliability, function, or design at any time without notice. The information contained herein is subject to change without prior notice.

The products depicted in this manual may include software copyrighted by Newland Europe BV or a third party. The user, corporation or individual shall not duplicate, in whole or in part, distribute, modify, decompile, disassemble, decode, reverse engineer, rent, transfer, or sublicense such software without prior written consent from the copyright holders.

This manual is copyrighted. No part of this publication may be reproduced, distributed, or used in any form without Newland Europe BV's written permission.

Risk Warning Regarding Unauthorized System Updates:

You should use the Newland-provided tool to update this product's system. Modifying system files by installing a third-party ROM system or using any cracking method may result in product malfunction or data loss and void your warranty.

Newland Europe BV reserves the right to make a final interpretation of the statement above.

Newland Europe BV

Rolweg 25, 4104 AV, Culemborg,
The Netherlands
www.newland-id.com

Newland Europe BV is a subsidiary of Newland Digital Technology Co., Ltd. Our general conditions of Purchase, Sale and Delivery are filed with the Record Office of the Chamber of Commerce of Utrecht, The Netherlands.

K.v.K. H.R. Utrecht / Chamber of
Commerce Utrecht:
Reg. nr. 17109876

Revision History

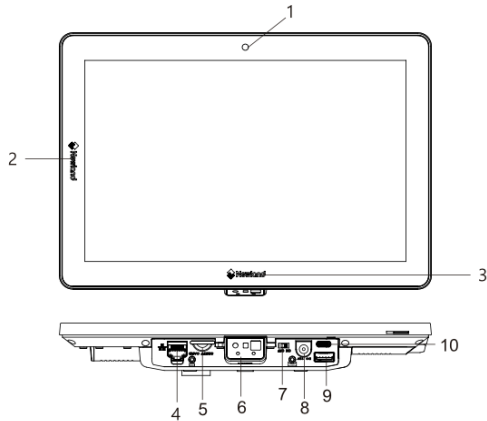
| Version | Description | Date |
|---------|------------------|----------------|
| V1.0 | Initial release. | Feb 29th, 2024 |

Table of Content

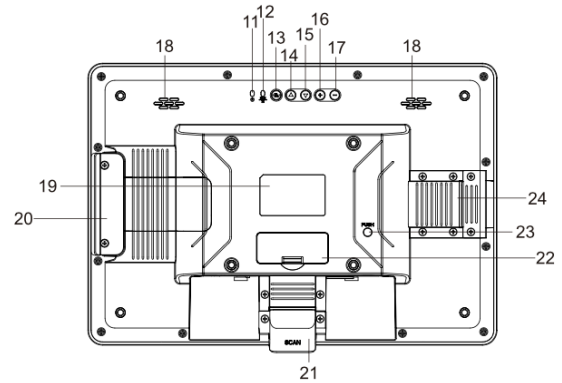
| | |
|-----------------------------------------------------------------|-----------|
| Chapter 1 Device Instruction & Installation | 3 |
| Hardware Instruction..... | 3 |
| 1. LED Indicator | 4 |
| 2. Sim/IF Installation | 4 |
| 3 Push Buttons | 4 |
| 4. Expansion Slots & Add-on modules..... | 5 |
| 5. Speaker | 7 |
| 6. Vesa Mount Holes | 7 |
| 7. DC-In Jack..... | 8 |
| 8. Barcode Scanner | 8 |
| 9. Control I/O Ports & Cover | 9 |
| 10. Interface | 12 |
| Chapter 2 Accessory & Installation..... | 13 |
| VESA Wall Mount | 13 |
| Installation & Operation | 13 |
| Chapter 3 Feature Programming | 14 |
| Home Screen..... | 14 |
| Network & Internet..... | 15 |
| Connected Device | 16 |
| Apps..... | 16 |
| Notification | 17 |
| Storage | 18 |
| Display | 19 |
| Wallpaper..... | 20 |
| Security..... | 21 |
| Privacy | 22 |
| System | 23 |
| About Phone | 24 |
| File Management..... | 25 |
| Infrared Sensing | 26 |
| Web Browser | 27 |
| Ethernet | 28 |
| Restoring Factory Settings | 28 |
| Chpter 4 Important Safety and Handling Information | 29 |

Chapter 1 Device Instruction & Installation

Hardware Instruction



| | |
|--------------------|----------------------------|
| 1 Camera | 2 Logo LED #1 |
| 3 Logo LED #2 | 4 RJ45 Ethernet Port |
| 5 SIM/TF Card Slot | 6 Barcode Scanner (Option) |
| 7 Power Switch | 8 DC-In Jack |
| 9 Type-C USB Port | 10 Type-A USB Port |



| | |
|-----------------------------|----------------------------|
| 11 Power LED Indicator | 12 Ethernet LED Indicator |
| 13 Menu key | 14 Up Key |
| 15 Down Key | 16 Vol+ Key |
| 17 Vol- Key | 18 Speaker |
| 19 Product Label | 20 Expansion Slot Cover |
| 21 Barcode Scanner (Option) | 22 Expansion Slot Cover |
| 23 Push-to-Release-Hole | 24 Scanner Connector Cover |

Hardware Instruction & Operations

(Installation & Uninstallation)

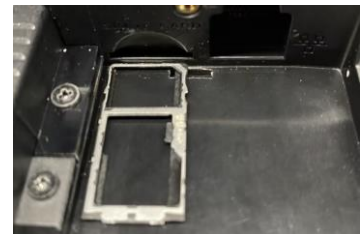
1. LED Indicator



| | | |
|----------------------------|------------------------------|----------------------|
| Power Status | Red LED is solid on | Power supply is on. |
| | Red LED is Off | Power supply is off. |
| Ethernet Connection | Green LED flashes constantly | Network connected |
| | Green LED is solid on | Network disconnected |

2. Sim/IF Installation

- 1) Release the screw on the SD card cover
- 2) Remove SD card cover
- 3) Insert SD card into the push-push SD card slot

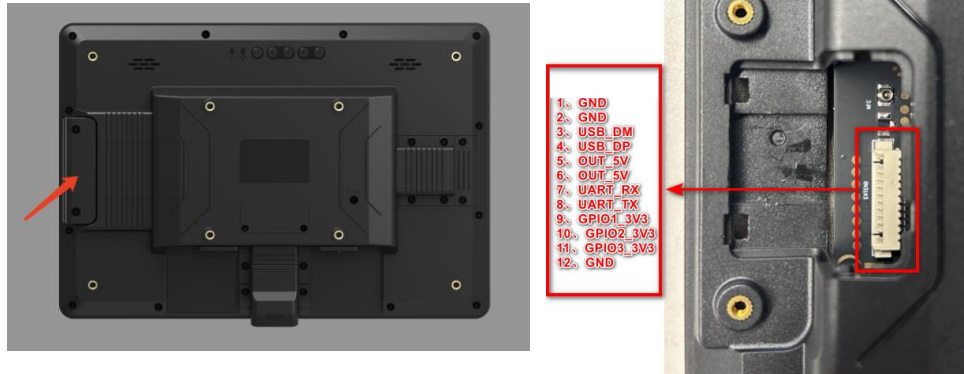


3 Push Buttons



From left to right, they are the menu key, up key, down key, volume +, and volume -.

4. Expansion Slots & Add-on modules

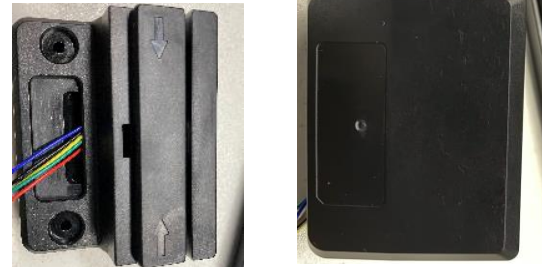


ADD-ON MODULES

NFC MODULE

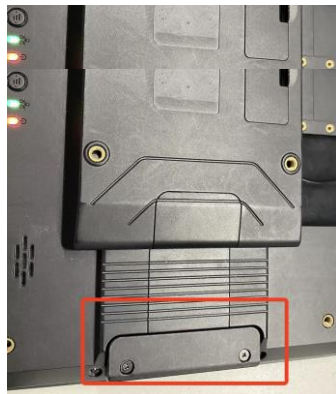


MSR MODULE



INSTALLATION (Enable the NFC/MSR in the system setting first)
Below is an example of NFC installation

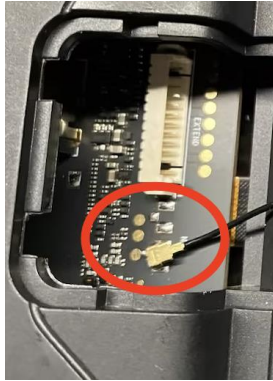
1. Unscrew and remove the covering part.



2. Gently lift the cover up with your hand.



3. Plug the jack of the antenna into the socket, then install the cover.

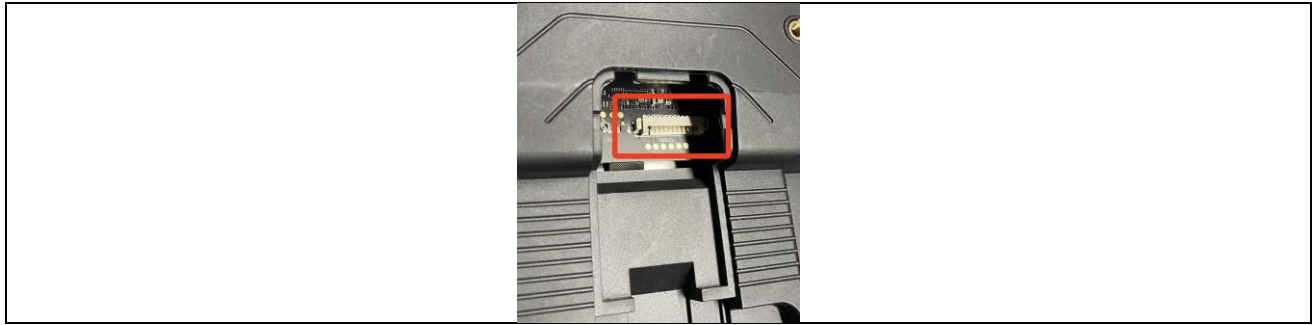


4. Remove the cover of the NFC antenna and secure it with a screw to ensure the fixation of NFC and NQuire



5. Install the cover of the NFC antenna

Notes: The installation steps for MSR are similar to NFC.
Connect the MSR to the NQuire jack as shown below

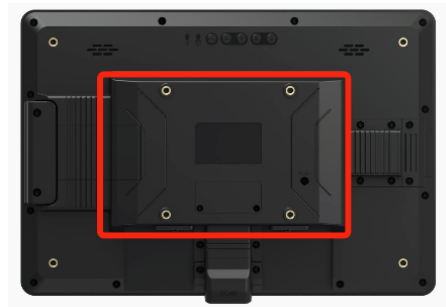


5. Speaker

Dual audio output.

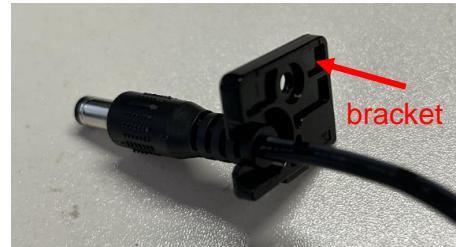
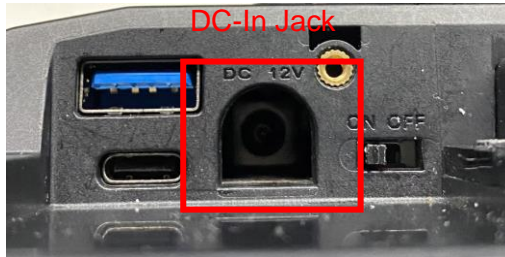


6. Vesa Mount Holes



7. DC-In Jack

Plug the power adapter into the power jack, and fix the position with a bracket to prevent it from loosening.



8. Barcode Scanner

The scan engine is set up in auto mode as the default setting. LED will light up when any object shows in front of the barcode scanner within proper distance, and the barcode engine will automatically scan when a barcode showed within a proper distance.

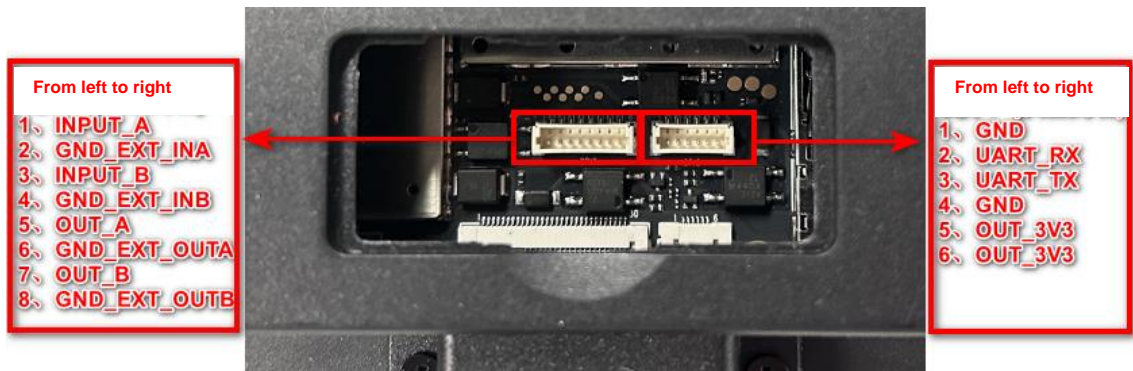
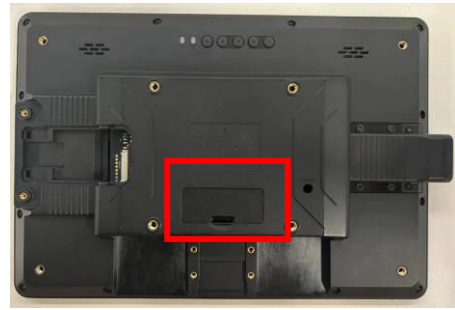
Notes: The scanner head can be changed from horizontal to vertical use:

- 1) Unscrew the screw to remove the scanner head.
- 2) Insert it into the vertical position and tighten the screw.

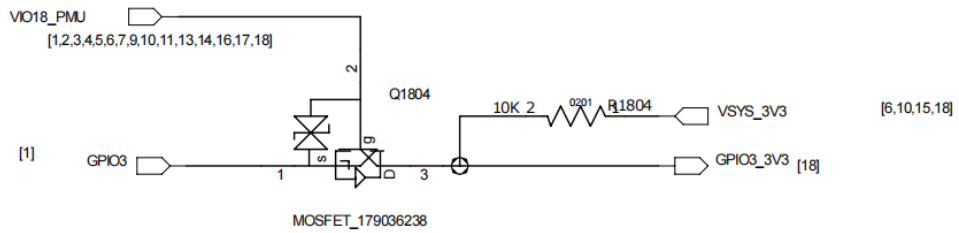
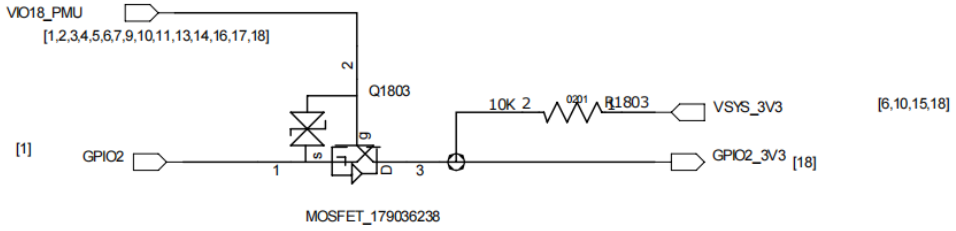
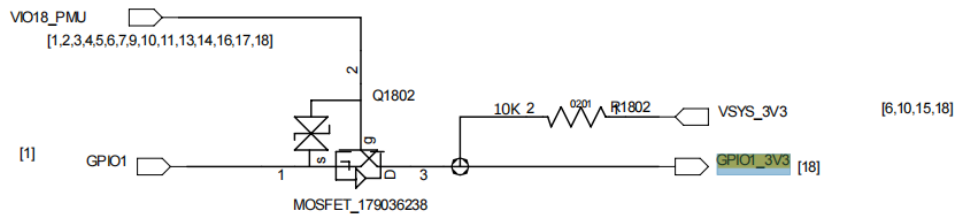


9. Control I/O Ports & Cover

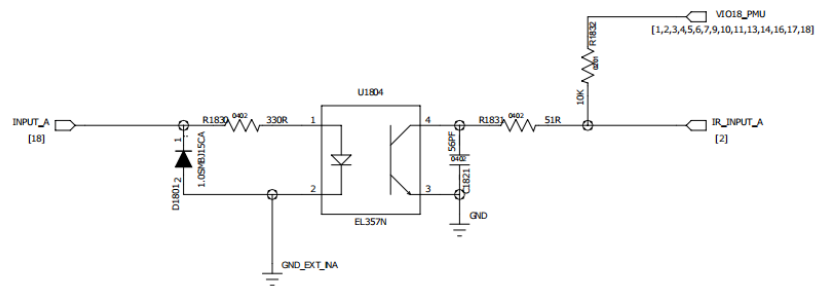
There are control IO ports (RS-232 & GPIO) under the Control IO cover (#22 in Quick Start).



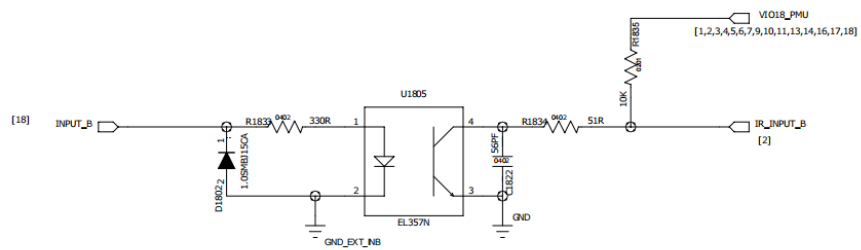
Typical Application Circuit for General Purpose Output (GPO):



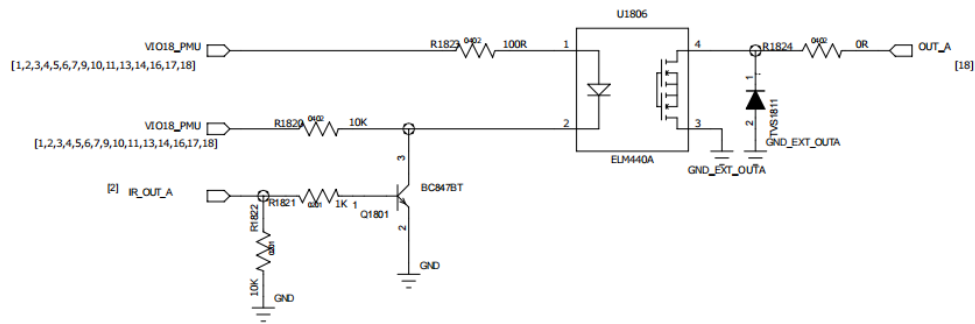
INA



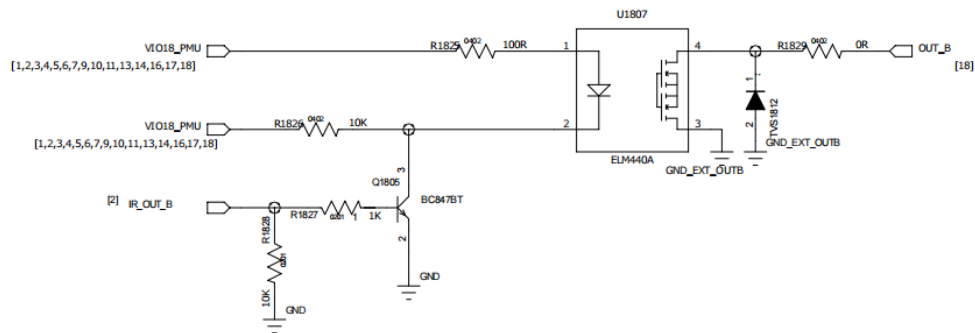
INB



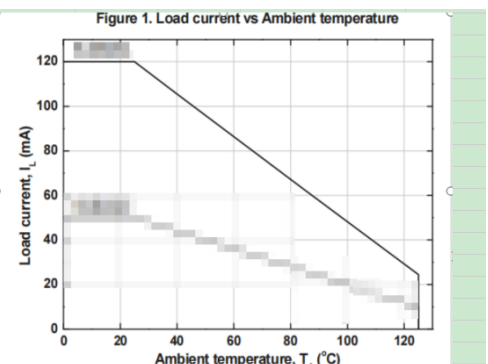
OUT_A



OUT_B



| NET NAME | CONDITION | RESULT | REMARK |
|-----------|---------------------|--------------------|----------------------------------------------------------------------------|
| GPIO1_3V3 | GPIO1_3V3=L/H | GPIO1=L/H | INPUT & OUTPUT PS.It is used as an interface for purchasing accessories |
| | GPIO1=L/H | GPIO1_3V3=L/H | |
| GPIO2_3V3 | GPIO2_3V3=L/H | GPIO2=L/H | |
| | GPIO2=L/H | GPIO2_3V3=L/H | |
| GPIO3_3V3 | GPIO3_3V3=L/H | GPIO3=L/H | |
| | GPIO3=L/H | GPIO3_3V3=L/H | |
| INPUT_A | INPUT_A=INT_VCC | IR_INPUT_A=L | INPUT |
| | INPUT_A=GND_EXT_INA | IR_INPUT_A=H | |
| INPUT_B | INPUT_B=INT_VCC | IR_INPUT_B=L | INPUT |
| | INPUT_B=GND_EXT_INB | IR_INPUT_B=H | |
| OUT_A | IR_OUT_A=L | OUT_A=OUT_VCC | OUTPUT |
| | IR_OUT_A=H | OUT_A=GND_EXT_OUTA | |
| OUT_B | IR_OUT_B=L | OUT_B=OUT_VCC | OUTPUT |
| | IR_OUT_B=H | OUT_B=GND_EXT_OUTB | |



Electrical Characteristics:

GPIO1_3V3, GPIO2_3V3, and GPIO3_3V3 voltage requirements are equal to 3.3V.

OUT VCC (external connection required) should be externally connected and requires an external series circuit. The series circuit size is set based on current requirements. The voltage requirement for OUT VCC is not greater than 24V. It is required that the current into the device from OUT-A and OUT_B inputs be less than 80mA at 60 degrees Celsius (subject to temperature variations, refer to above diagram).

INT_VCC (external connection required) voltage requirement is not less than 3.3V

and not greater than 20V. (External series circuit can increase input power supply voltage, with the requirement that the input current does not exceed 50mA.)

10. Interface

The interfaces are shown as below :

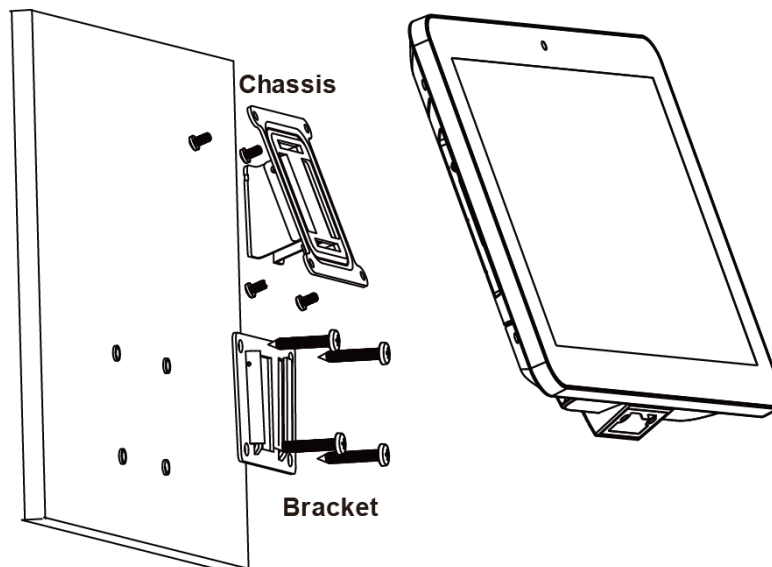


VESA Wall Mount

Installation & Operation

1. Select a mounting location that is convenient for operation.
2. Remove the screw attaching the bracket to the chassis of The VESA 75 mount.
3. For wall mounting, install the four plastic wall anchors in a wall and then secure the bracket of VESA 75 mount to the wall using the four large screws. For countertop/shelf mounting, secure the bracket of VESA 75 mount to a countertop/shelf using the four large screws.
4. Complete all wire/cable connections to the NQuire. Secure the chassis of VESA 75 mount to the back of the NQuire using the four small screws.
5. Attach the bracket back to the chassis with the screw that was removed in step 2.

Notes: For safety, it is advisable not to install the product at a height exceeding 2 meters.

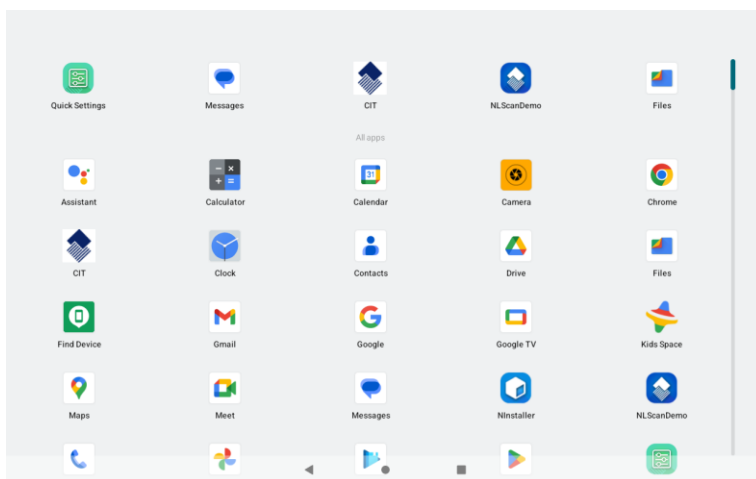
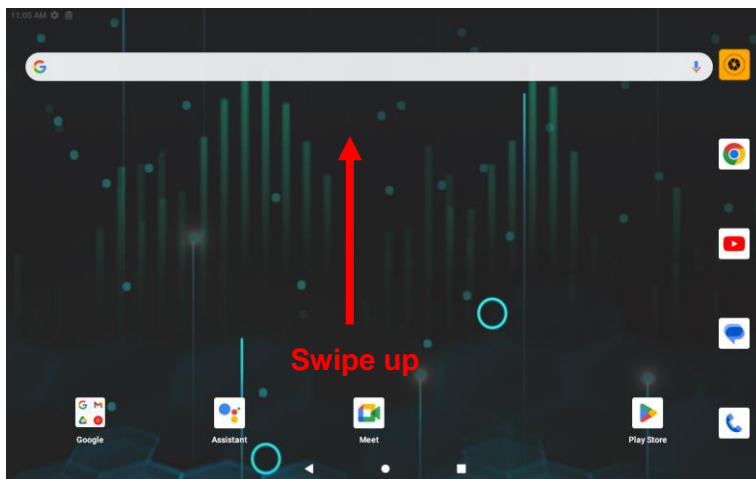


Chapter 3 Feature Programming

Home Screen


Open an app: Tap it.

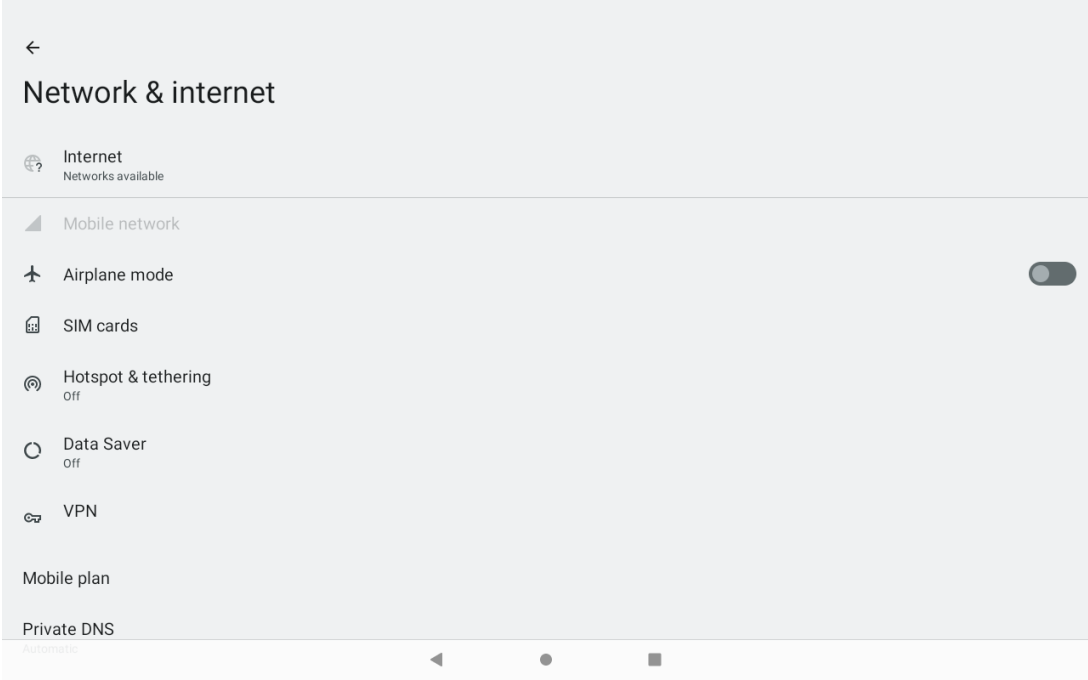
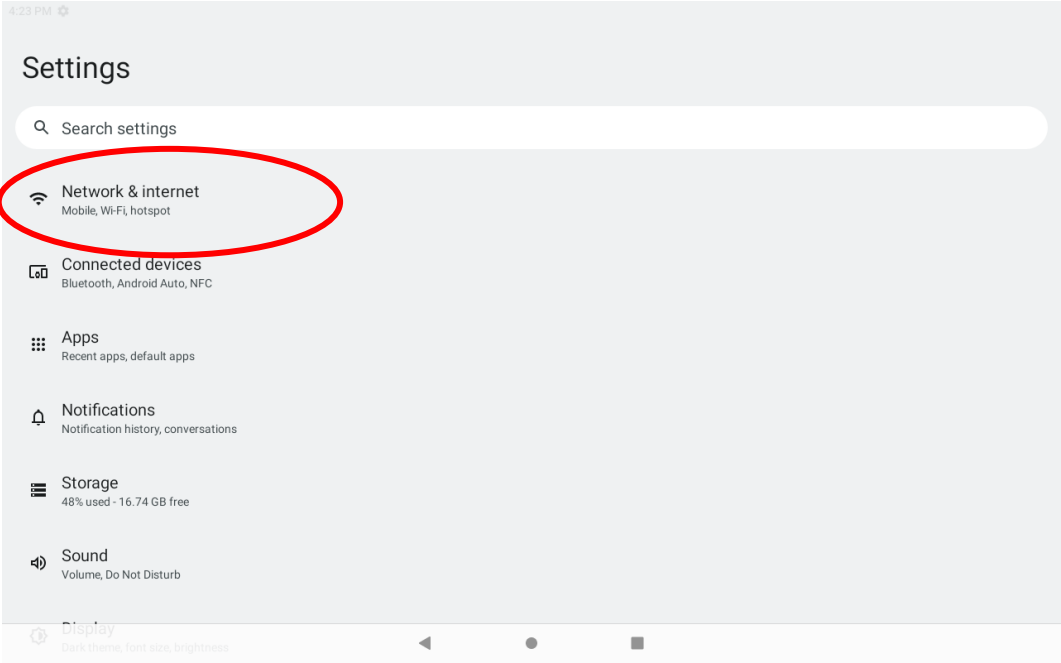
View all apps/Open apps list: Swipe up from the bottom of the screen to view all the apps.




Apps list

Network & Internet


Tap the app icon  -> "Network & Internet", then set Wi-Fi, Mobile Network, Hotspot & Tethering, and VPN according to your needs.

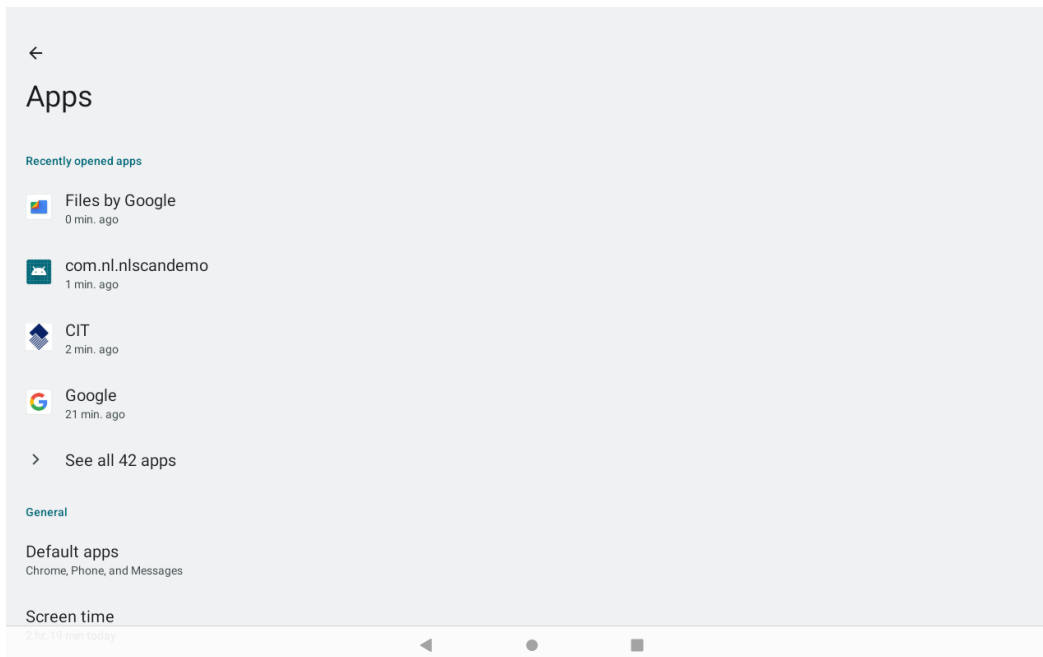


Connected Device


Tap the app icon  -> “Connected devices”, and set USB, Bluetooth, and NFC parameters according to your needs.

Apps

Tap the app icon  -> “Apps”, then view app usage and handle special app access.




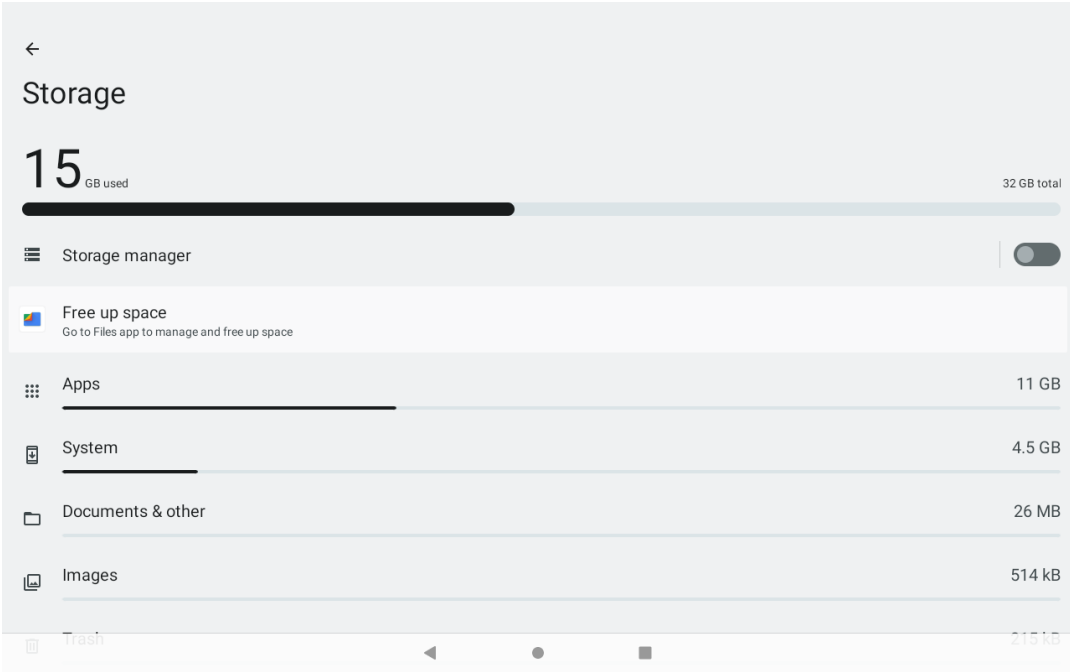
Notification

Tap the app icon  -> "Notification", then manage device notifications, including notification history, notification on lock screen, do not disturb mode, and other parameter settings.




Storage

Tap the app icon  then “Storage” to display the current device storage status and manage storage.




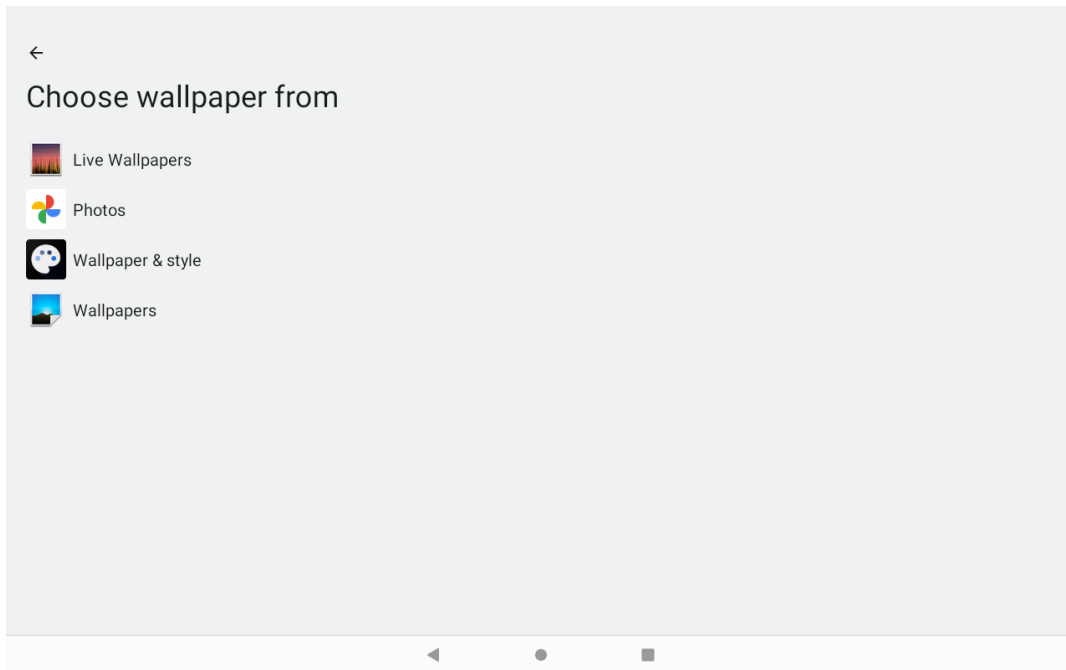
Display

Tap the app icon  -> "Display", and set the brightness level, dark theme, night light, and other parameters on the screen shown below as per your needs.




Wallpaper

Tap the app icon  -> "Wallpaper", and choose the wallpaper for Home screen and Lock screen.




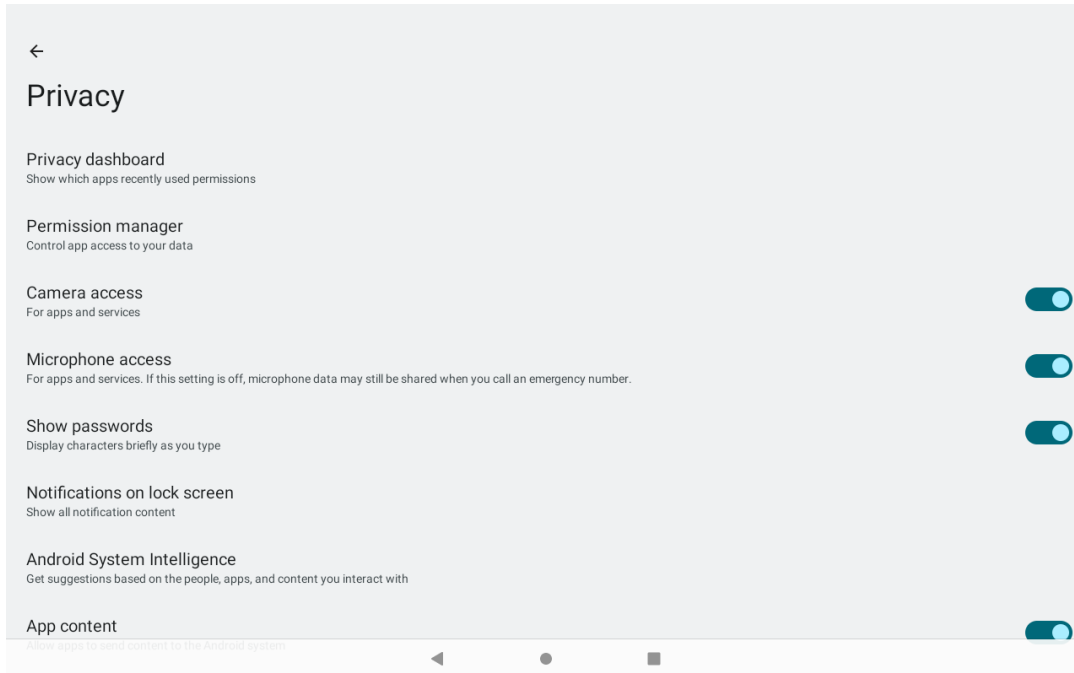
Security

Tap the app icon  and then “security” to set up screen lock, find my device, security updates, and other parameter settings.




Privacy

Tap the app icon  -> "security", then view the privacy dashboard and set permission manager, camera access and other parameters.




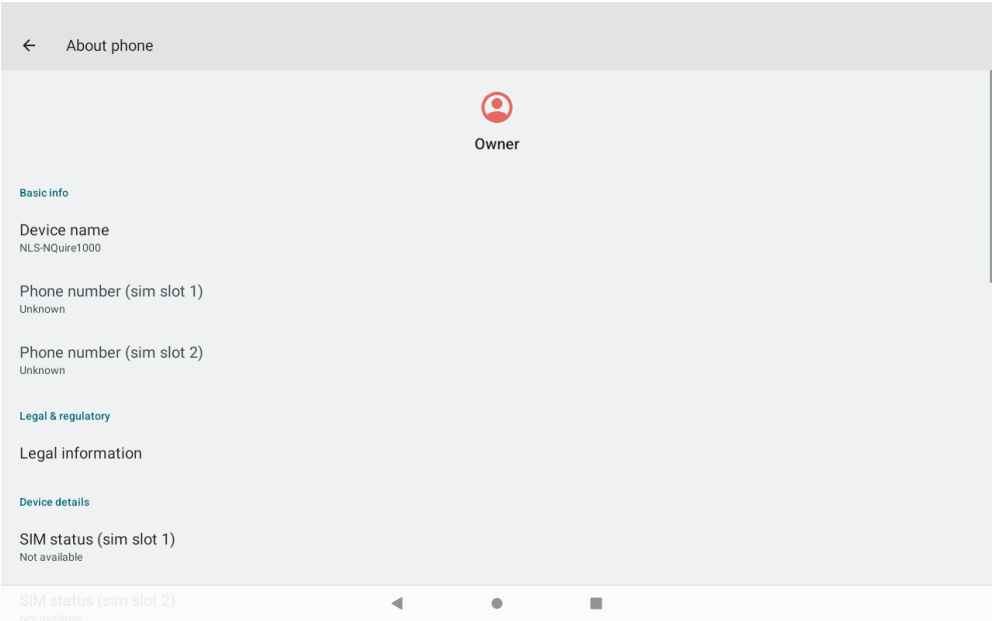
System

Tap the app icon  -> "system", then set language and input settings, date and time preferences, system updates, and restore factory settings

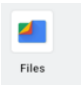


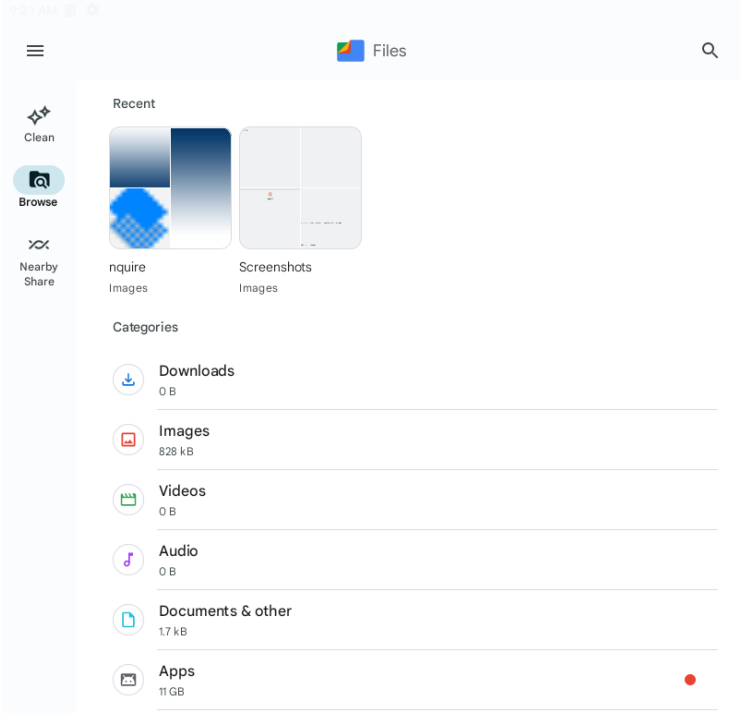
About Phone

Tap the app icon  -> "About phone", then view information such as the device name, product model, MEID, Android version, build number, and software updates.



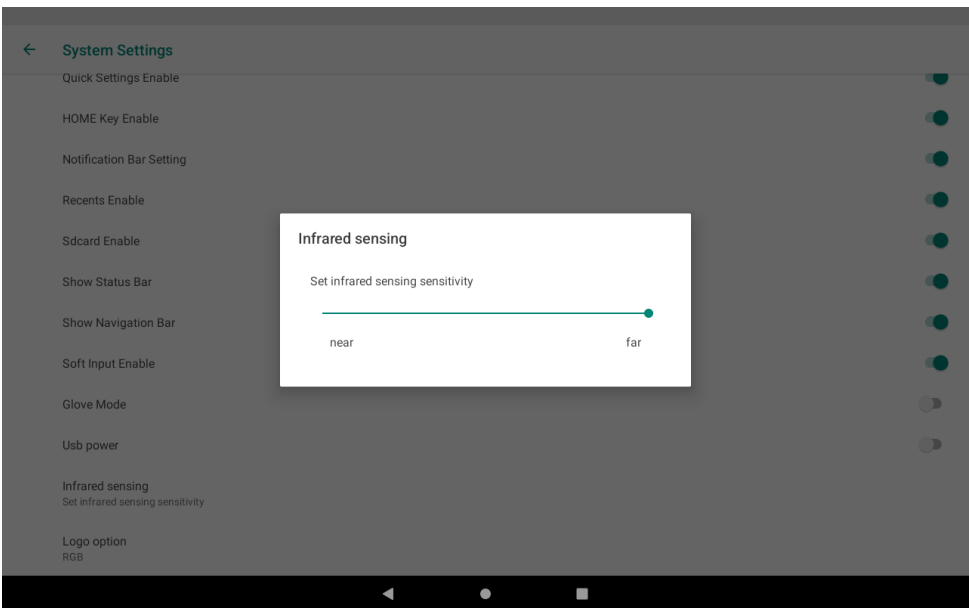
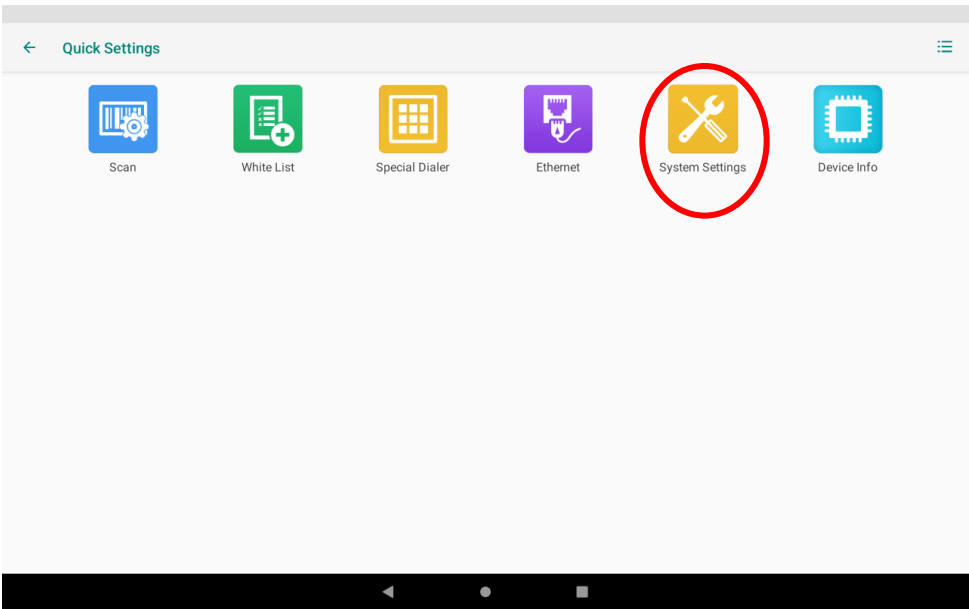
File Management

Tap the app icon  on the Home screen and then manage all the file on the device.



Infrared Sensing

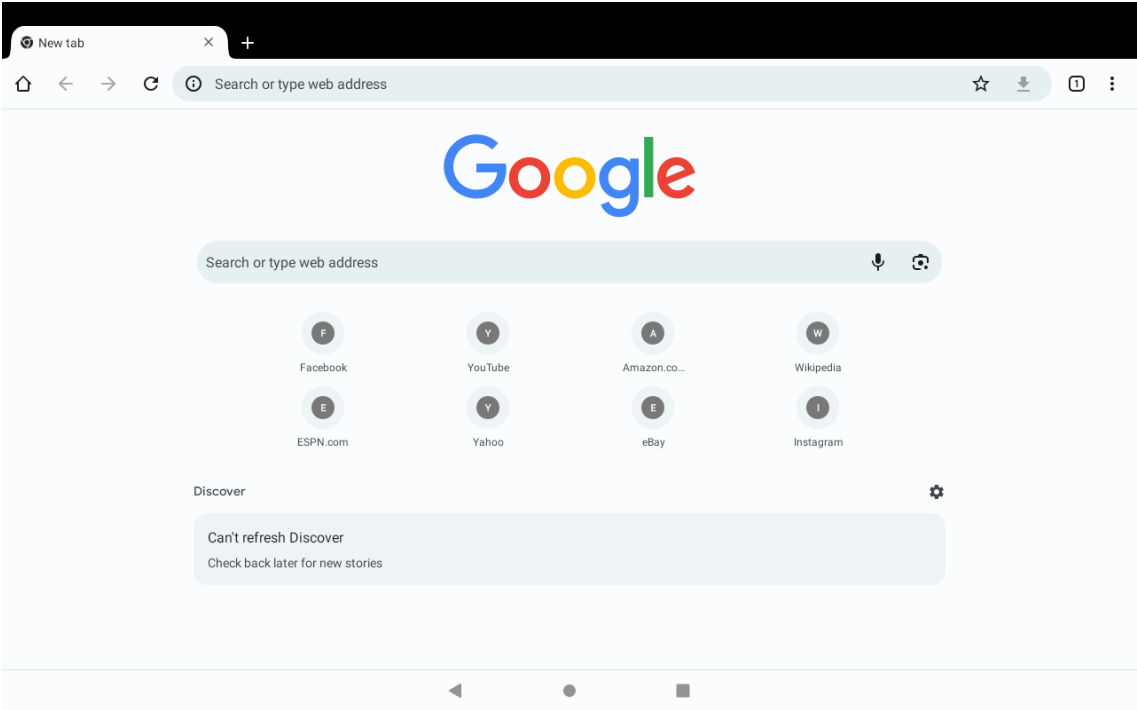
Tap the app icon  on the Home screen then  System Settings, and tap “Infrared sensing” to manually set the infrared sensing distance (7cm to 30cm from near to far).



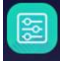
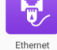
Web Browser



Tap the app icon on the Home screen, and use Google Chrome to log in and access websites.




Ethernet

Tap the app icon  on the Home screen then  to set ethernet parameters. Currently, the default setting is a static IP.

Note: If you intend to connect the device to the internet via Ethernet, ensure Wi-Fi is turned off and insert the Ethernet cable into the device's Ethernet port.

Restoring Factory Settings

Tap the app icon  -> “System” -> “Reset options” -> “Erase all data (factory reset)” -> “Erase all data”. After this operation, the terminal will be reset to factory defaults and all the personal data on the internal storage, such as music and photos, will be deleted.

Chapter 4 Important Safety and Handling Information

- ✓ **Please read the instructions carefully before equipment installation and using the device.**
- ✓ **Do not install the product at a height exceeding 2 meters.**
- ✓ **Do not put the product in a high-temperature, humid, or dusty environment.**
- ✓ **Do not drop, crash, or break down this product.**
- ✓ **Do not power off the device when it's formatting or upgrading; otherwise, it will cause an operating system error.**
- ✓ **Use only approved add-on enhancements.**
- ✓ **This product contains button batteries. If swallowed, button batteries can cause severe burns within 2 hours and may lead to death.**

SCANNING MADE SIMPLE

Newland EMEA
+31 (0) 345 87 00 33
info@newland-id.com

Rolweg 25
4104 AV Culemborg
The Netherlands



@NewlandEMEA