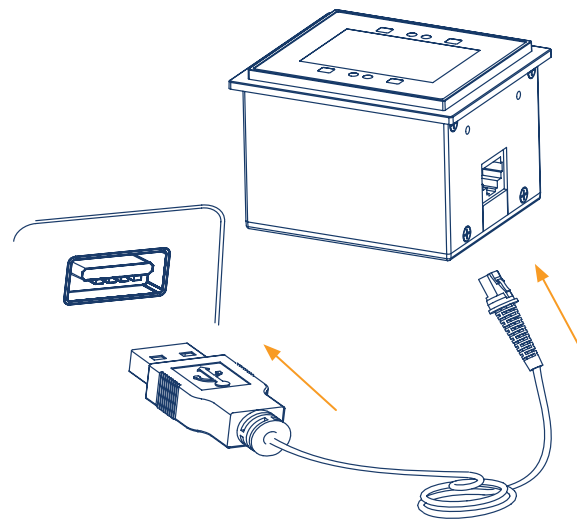
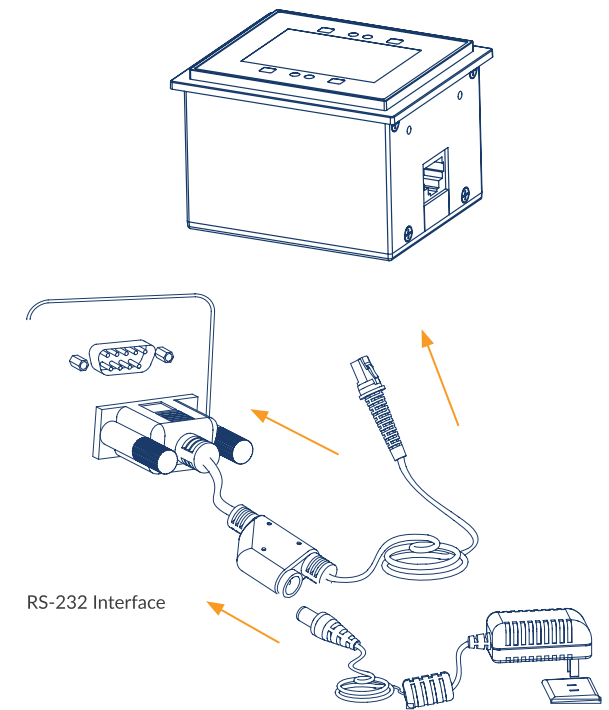


1



USB Interface

2



RS-232 Interface

3

Note: The host refers to a PC, POS, or other terminal equipped with USB or RS-232 interface.

Scanning instructions

Sense scan mode (default):

- Step 1:** Connect the scanner to a host with the cable. Then the scanner will be powered on with a beep.
- Step 2:** Place the mobile phone screen or paper close to the scan window and present the barcode to the center of the window, adjusting the distance between them within the range of 1cm - 5cm.
- Step 3:** For a successful read, the scanner will beep. After sending the data to the host, it will enter standby mode.

Troubleshooting

When the scanner is not working, please:

- 1 Ensure that all cable connections are secure and that only the supplied cables are used.
- 2 Ensure that the screen backlight is on when reading digital barcodes off a mobile phone and that the barcode is not defaced when reading it on paper. Wrinkled, soiled, or torn barcodes might be unreadable.
- 3 Ensure that the barcode type is enabled.

4

CE / WEEE



Marking and European Economic Area (EEA)

Statement of Compliance

We hereby declares that this device is in compliance with the essential requirements and other relevant provisions of Directive 2014/53/EU. The ventilation should not be implied by covering the ventilation openings with items, such as newspapers, table-cloths,curtains, etc.; This product's max operating ambient temperature is 50 degrees C. --- Direct Current Symbol



This product bears the selective sorting symbol for Waste electrical and electronic equipment (WEEE). This means that this product must be handheld pursuant to European directive 2012/19/EU in order to be recycled or dismantled to minimize its impact on the environment.



FM3056
Grouper



Visit our website
newland-id.com